



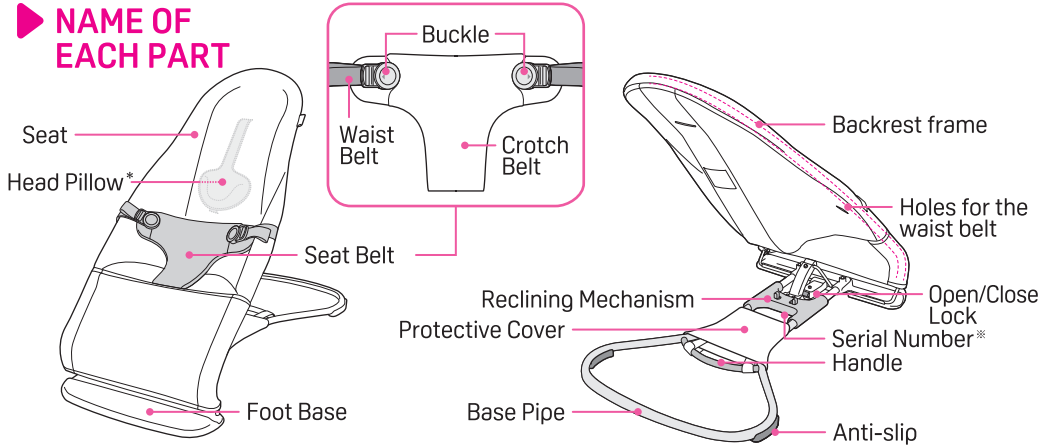
Wuggy ウギー

Instruction Manual

Suitable for 1 to 30 months old
(15kg and below)

- Please read this instruction manual carefully before use to ensure a correct product usage.
- Please keep this instruction manual properly after reading.
- Please include this instruction manual when handing over this product to another user.

NAME OF EACH PART

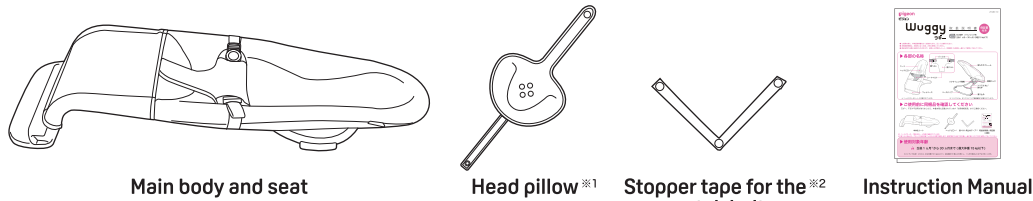


* : The head pillow is built into the seat.

※ : The serial number can be found on the back of the reclining mechanism.

PLEASE CHECK THAT ALL ITEMS ARE INCLUDED BEFORE USE

If any item is missing or defective, please contact the “Customer Care” listed at the end of this manual.



※1 The head pillow is attached to the inside of the seat at the time of purchase.

※2 Use the stopper tape for the crotch belt in a seat position (approximately from 7 months old onwards).

Please keep it with this manual until the baby is ready to use it.

AGE FOR USE

Suitable for 1※ to 30 months old (Maximum weight: 15kg and below)

※ : The term “1 month old” as used herein refers to a child who weighs 2.5kg and above, has a gestational age of 37 weeks or more, and is one month old.

PRECAUTIONS

For Safety Purposes

Note

This manual contains warnings and precautions one should be aware of when using this product. The contents of the description are solely for the purpose of ensuring a correct and safe usage of the product, and to prevent any harm or damage. Failure to comply with the instructions may result in a serious damage to the children, parents and others.

Indication	Content
Warning	Improper handling can result in death or serious injuries.
Caution	Improper handling can result in a personal injury or physical damage to the product.

Warning

- Please do not use this product for children who are not within 1 to 30 months old, or whose weight is more than 15kg.
- The frame may be deformed if it is used by children over the applicable weight.
- Please do not leave your child unattended on the bouncer.
- When in use, please ensure that the product is within the reach of parents or guardian, and refrain from rocking the product for a long time (more than 2 hours).
- This product can be used for naps. However, please do not use it as a bed for overnight sleeping purposes.
- Please use the seat belt when using the product as a bouncer.
- For children below 3 to 4 months old and unable to hold their heads up without support, please use the product in low position where the backrest is at its most reclined position.
- Please use the product as a chair only after your child is able to sit on his/her own.
- Please remove the seat belt when your child is able to stand on his/her own.
- Please use the product only on flat surfaces and not on elevated areas/high places.
- Please do not use the product on soft surfaces such as beds or sofas as the main body of the product may tip over and cause suffocation of the child.
- When the product is in use, please refrain other children from pushing the product as the seated child may fall.
- Please do not recline or lift the seat or move the main body of the product when in used as the child may fall.
- Please move the main body by its handle and not by its attachments or stitched areas.
- Please do not allow your child to stand on the seat as there is a risk of falling.
- Only one child may use the product each time. Please do not put more than one child on the seat at any time.
- Please do not sit on the backrest frame directly. It may cause deformation or damage to the frame.
- Please do not use the product other than its intended purpose, such as a stool or play equipment, as it may be damaged or deformed.
- Please do not use the product near a heater or electric fan as there may be a risk of burns or injury.
- Please be careful when folding the main body to prevent your fingers from getting caught.
- Please stop using the product immediately if it is damaged or out of order.
- When using as a bouncer, please stop using the product immediately if your child bounces too much that the product lifts off the ground, as it may tip over.
- Please refrain from letting your child move greatly from side to side when seated as there may be a risk of falling.
- This product is for indoor use. Please do not use it outdoors.
- Please do not use the product in moving objects like cars.
- Please do not store the product horizontally with the main body open.
- Please remove the buckle when not in use as the child may move around and suffocate with the seat belt. In this regard, please insert the waist belt into the holes for waist belt, fold the buckle inwards and put it in the insertion slot for storage.
- The protective cover attached to the base pipe is designed to prevent children from getting their heads caught in it. Please use the product with the hook-and-loop fastener closed.
- Please attach only genuine accessories from the same manufacturer to the main body of the product.
- Please stop using the product and consult a doctor immediately if you notice any changes in your child's conditions when using the product.
- Please immediately dispose of the plastic bags and packing materials included when you purchased the product.



Caution

- Please have an adult or guardian to handle this product.
- When folding the main body or adjusting the reclining angle, please hold the frame with your hand to prevent your arms or fingers from getting caught.
- The frame of the main body is made of a metal pipe. To prevent any scratches on the floor, please handle the product with care.
- Please do not disassemble or repair the product by yourself.
- Please keep the seat clean at all times. Leaving spilled food or sweat on the seat may cause mold and mites.

WAYS OF APPLICATION

BOUNCER



**For infants between 1 to 12 months old
(Maximum weight: 9kg and below)**

- Please fasten the seat belt when using the product as a bouncer.
- Please remove the head pillow when your child is able to hold up his/her head on his/her own.
- Please switch to using the product as a chair when your child is able to stand up on his/her own.

CHAIR



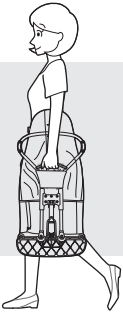
**For infants between 7 to 30 months old
(Maximum weight: 15kg and below)**

- Please remove the head pillow.
- Please use this function when your child is able to sit up by him/herself.
- Please remove the seat belt and use this function when your child is able to stand up on his/her own. **Refer to the conversion of seat.**

Portability

Compact when folded completely, the product can be easily carried by holding its handle.

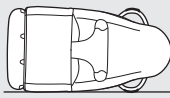
Please hold and carry the cushion side of the seat towards your body.



Self-standing (Horizontal position)

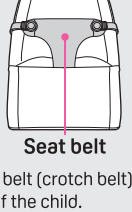
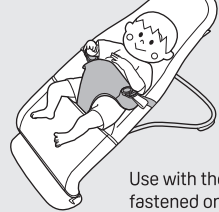
When folded, the product can stand on its own (in horizontal position) and be stored in small spaces.

Please remove the buckle when not in use as the child may move around and suffocate with the seat belt. In this regard, please insert the waist belt into the holes for waist belt, fold the buckle inwards and put it in the insertion slot for storage.



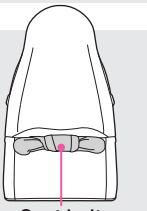
Conversion of seat

BOUNCER



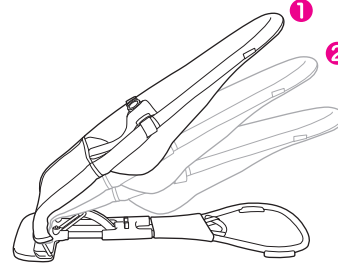
Use with the seat belt (crotch belt) fastened on top of the child.

CHAIR



Unfasten the buckle (which separates the crotch belt from the waist belt) and stow the end of the waist belt and the crotch belt.

Guideline for the adjustment of reclining angle



- High Position**
Recommended infant weight: 15kg and below
Please use in this position after the child is able to sit well without support.
- Middle Position**
Recommended infant weight: 10kg and below
Please use in this position after the child is able to hold his/her head up.
- Low Position**
Recommended infant weight: 7kg and below
Please use in this position for infants around 3 to 4 months old until the child is able to hold his/her head up on his/her own.

HOW TO USE THE PRODUCT

Opening and closing/Angle adjustment

How to open

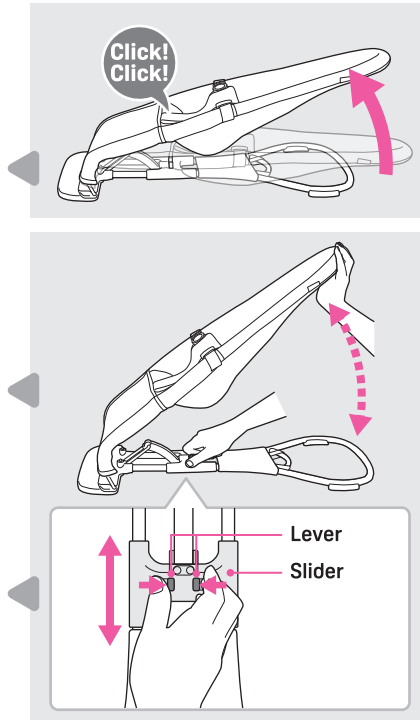
1. While holding the base pipe, lift the backrest frame until it clicks twice.
2. Move the backrest frame up and down to make sure it is locked. The first locked position is the low position.

How to adjust the reclining angle (3 stages)

1. While supporting the backrest frame with one hand, release the lock by pinching the lever and pushing it inward.
2. Lift the backrest frame and release the lever.
The first click is the middle position. Please make sure that the backrest frame is locked.
3. To lift the backrest frame to high position, please repeat step 2.

How to fold

1. While supporting the backrest frame with one hand, release the lock by pinching the lever and pushing it inward.
2. With the lever pushed in, lower the backrest frame slowly.
3. Please make sure that it is locked with a clicking sound and that it is fixed in the folded state.



Warning Please do not adjust the reclining angle with your child on the seat.
Please be careful when folding the main body to prevent your fingers from getting caught.

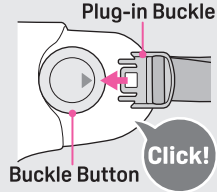
Caution If you adjust the backrest frame without supporting it with another hand, the backrest frame may fold and hurt your arm.

How to use the waist belt and buckle

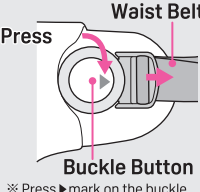
Fastening and unfastening the buckle

1. The buckle can be put on by inserting into its buckle body.
2. To remove, simply push in the buckle button as indicated by **▶** and pull out the buckle.

FASTEN



UNFASTEN



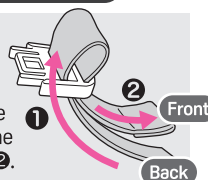
※ Press **▶** mark on the buckle button

Warning Please ensure that the seat belt is fastened when using the product as a bouncer.
Please also ensure that the seat belt is fastened when using the product as a chair until your child is able to stand on his/her own.

How to adjust the waist belt

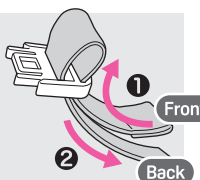
TO TIGHTEN

Insert the waist belt from the underside of the plug-in buckle to the direction of **①**. Next, adjust the waist belt from the front side of the plug-in buckle to the direction of **②**.



TO LOOSEN

Push the front of the waist belt to the direction of **①** and adjust by pulling the waist belt from the underside of the plug-in buckle in the direction of **②**.

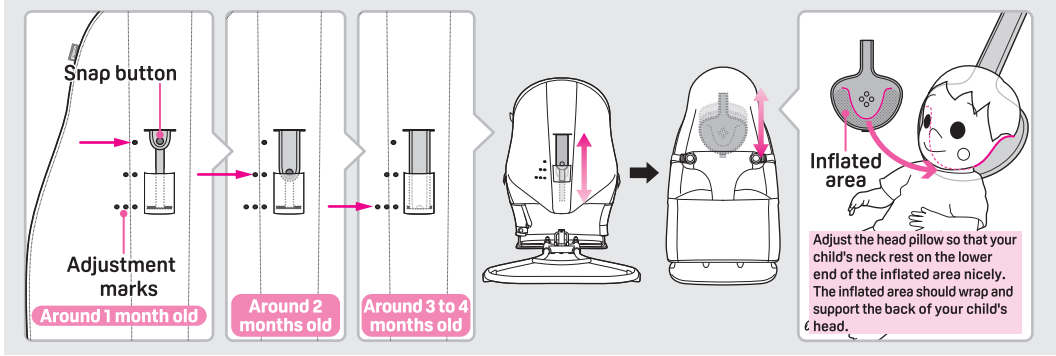
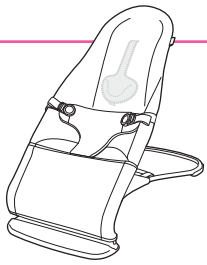


Caution After adjusting the length of the belt, please pull it again and check that the buckle does not come off.

▽ How to use the head pillow

The head pillow can be attached or detached by putting on or removing the snap button of the head pillow on the back of the seat.

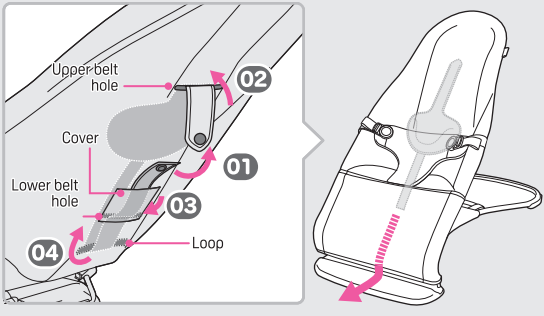
The head pillow is for stabilizing the child's posture before the child is able to hold up his/her head on his/her own. Please adjust the snap button position according to the position of your child's neck, using the mark on the back of the seat as a guide. By lowering the position of the snap button, the head pillow goes up. Recommended to use the pillow for infants between 1 to 4 months old until the child is able to hold up his/her head without support. When your child is able to hold up his/her head, please use the product without the head pillow.



- ⚠ **Warning**
- Please adjust or remove the head pillow according to the age of your child.
 - Please make sure that your child's airway is not blocked.

▽ How to attach and detach the head pillow

1. Unfasten the snap button on the head pillow.
2. Pull out the upper belt from the upper belt hole.
3. The holes for the waist belt of the lower belt is on the inside of the cover.
4. Pull the lower belt out of the loop from the inside of the seat and remove the head pillow from under the seat.



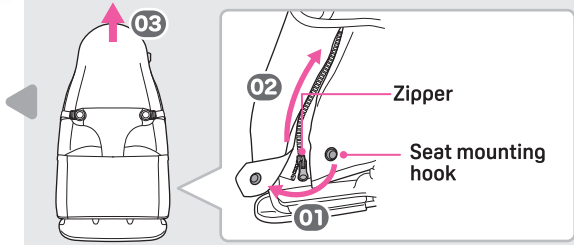
Point It will be easier to attach and detach the head pillow by removing the seat from the backrest frame and turning it over front to back.

▽ How to attach and detach the seat

How to detach

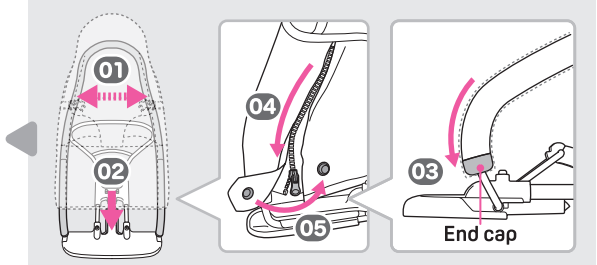
1. Undo the seat mounting hook.
2. Fully open the zipper on the back of the seat.
3. Pull the seat up to remove it from the backrest frame. Please note that the seat is made tight to fit the frame.

Point It will be easier to detach the seat if you unfasten the buckle in advance.



How to attach

1. Align the seat so that the crotch belt is in the center of the backrest frame.
2. Put the seat on the backrest frame and adjust to prevent creases.
3. Lower the seat to the end so that it covers the end cap of the backrest frame.
4. Close the zipper fully.
5. Secure the seat mounting hook.

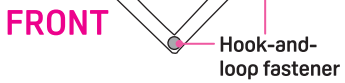


- ⚠ **Caution**
- Lower the seat to the end so that it covers the end cap of the backrest frame.
 - To prevent the seat from slipping, please make sure to zip down fully and that the seat mounting hook is fastened.

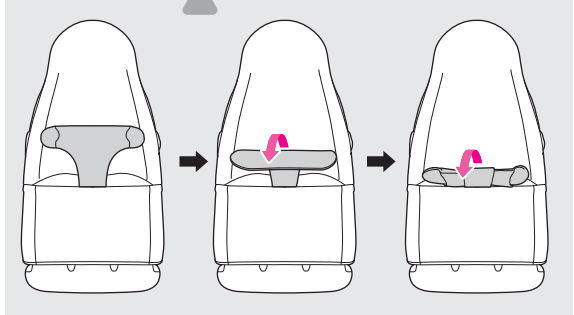
▽ Switching between bouncer and chair

1. Unfasten the buckle, fold the buckle button inwards and store it in the seatbelt slot. Do the same for both sides.

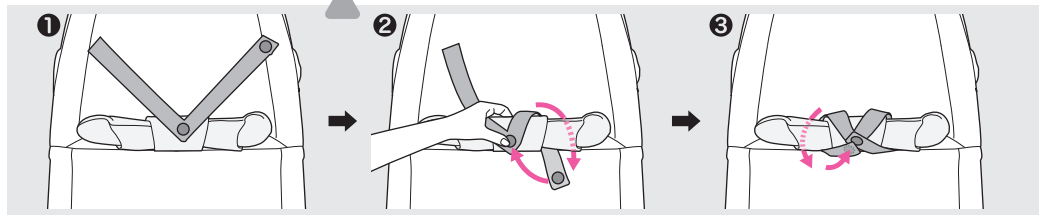
Please have the stopper tape for crotch belt at hand. The stopper tape has front and back, so please check in advance.



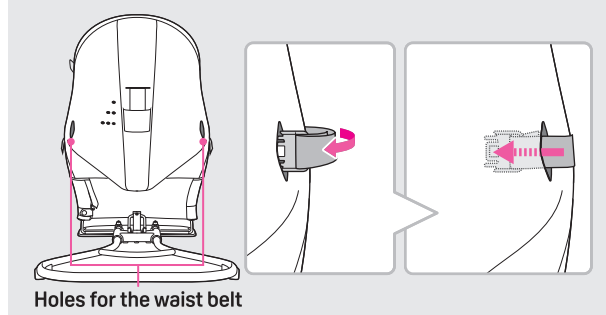
2. Roll the seat belt. (About 2 times)



3. With the front side of the stopper tape for the crotch belt facing up, ① place the lower end of the V-shaped stopper tape on the center of the rolled-up seat belt, ② wrap the right side of the seat belt with the stopper tape and fasten. ③ Next, wrap the left side of the seat belt and fasten it in the same way. (Fasten it on top of the right side of the tape.)



4. Insert the waist belt into the holes for storage. Do the same for both sides.



- ⚠ **Caution**
When using as a chair
- Fold the buckle inside the crotch belt so that the buckle is not visible.
 - Without wearing the seat belt, wrap the crotch belt and fasten it with the stopper tape for the crotch belt.
 - The waist belt can be stored by inserting it into the holes for the waist belt on the back of the seat. Please do not use it in a hanging state.
 - Please remove the head pillow before use.

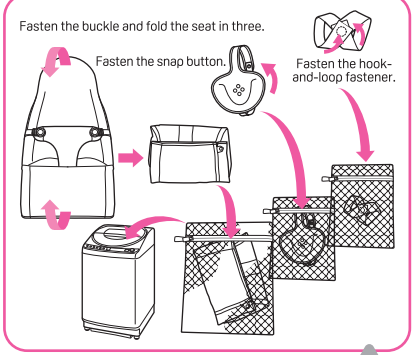
► CARE INSTRUCTIONS

For maximum comfort use, please wash it regularly.

▽ Seat, head pillow and stopper tape for crotch belt

Washing care

- To hand wash, please dissolve mild laundry detergent in water at 30°C and below and wash gently.
- To machine wash, please use a laundry net, mild laundry detergent and wash in a gentle mode in water at 30°C and below.
- Please wash the seat, head pillow and stopper tape for crotch belt in separate laundry nets.
- After draining and spinning, take the laundry out immediately and lay flat to dry to retain its shape. Please avoid direct sunlight.



⚠ **Caution**

- Please fasten the buckle and fold the seat in three so that the buckle is inside before putting into the laundry net for machine wash to prevent the buckle from getting damaged.
- Join the hook-and-loop fasteners on the crotch belt so that they do not come out.
- Due to the characteristics of the product, colour fading may occur depending on the usage.
- Please avoid using detergents that may contain optical brighteners or bleach. Please read the instructions of the detergent in advance before use.
- Please do not bleach the product.
- Please do not tumble dry the product.
- Insufficient drying may cause odours and mold.
- Please do not iron the product.
- Please do not send the product for commercial cleaning such as dry cleaning and wet cleaning.
- Repeated washing may cause creases or the cushion to be thinner than before. However, this does not affect the product usage.

▽ Main body of the bouncer and protective cover

Point The protective cover cannot be removed from the main body of the bouncer (base pipe).

Wiping care

- Please use a damp towel to wipe off any dirt.
- A metal spring is used for the reclining mechanism and open/close lock. Therefore, please avoid using a wet towel on them to prevent rusting.

⚠ **Caution**

- Some detergents may contain ingredients that affect the plastic and can cause discoloration or damage.
- Please wipe gently when using wet wipes as wipes that contain alcohol may cause discoloration.
- Rubbing too hard may cause the paint to peel off.
- Please wipe off the deposits on the anti-slip regularly with a damp towel as deposits such as dust may cause the anti-slip to lose its function.

▽ How to inspect

- Please perform an opening and closing of the product to check for any defects. Please make sure that the fasteners do not come off easily.
- Please make sure that the waist belt and seat are not frayed or torn.
- Please make sure that the buckle is locked by performing the lock/unlock operation.

⚠ **Caution**

- Please do not modify, disassemble or repair the product by yourself.
- If there is any defect found during the inspection, please stop using the product immediately and request repair from the repair centre. The contact information for the repair centre can be found at the end of this manual.
- If there is any abnormality with the buckle, please stop using it immediately.
- If the product has not been used for a long time, please perform the inspection procedure as shown on the left before using it.

▽ How to store

- Please make sure that the product does not fall over easily when stored upright in a horizontal position.
- Please unfasten the buckle when not in use as the child may move around and suffocate with the seat belt. In this regard, please insert the waist belt into the holes for waist belt, fold the buckle inwards and put it in the insertion slot for storage.
- Please do not place anything on the product.

⚠ **Caution**

- Please follow the storage method shown on the left.
- Please do not store the product near fire, in a humid environment or under direct sunlight as this may cause deformation or discoloration.
- Please do not store the product on stairs or shelves where it may fall.

▽ How to dispose

- Please dispose the product according to the disposal method as recommended by your local authority.
- For environmental protection, please do not leave the product without proper disposal.

Customer Care

For all inquiries about the product, contact our customer care at:

Pigeon Singapore Pte Ltd.
80 Bendemeer Road #06-01B,
Singapore 339949

Email: ps.info@sg.pigeon.com
Tel: +65 6541 1700
Operating hours: 9.30-17:00
(excluding Sat, Sun and Public Holidays)
(closed at 12:30 - 13:30 for lunch)