

Pigeon SofTouch™ Nursing Bottle

READ ALL INSTRUCTIONS BEFORE USE.
RETAIN THIS PRODUCT INFORMATION
FOR FUTURE REFERENCE.

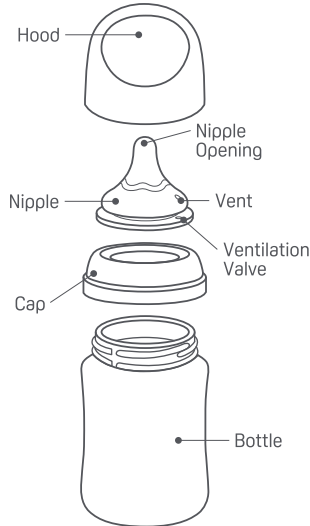
Pigeon Corporation

4-4, Nihonbashi Hisamatsu-cho,
Chuo-ku, Tokyo 103-8480 JAPAN
www.pigeon.com

SofTouch™

Developed from over
65 years of breastfeeding research

Supports the 3 steps
of baby's natural sucking motion



Before First Use

Before first use, disassemble the product and clean thoroughly. Then, place all components in boiling water for 5 minutes. This is to ensure hygiene. Always wash your hands with soap before cleaning, sterilizing and feeding.

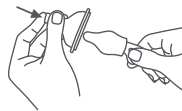
Cleaning & Storage Instructions

- After each use, wash thoroughly and sterilize.
- Immediately after use, rinse in warm water and wash using Pigeon Liquid Cleanser.
- Disassemble and clean the product thoroughly.
- Use a sponge brush to wash plastic bottles. Use a nylon brush to wash glass bottles.
- Abrasive scrubbing brushes, metal scrubbing brushes and abrasive cleansers should be avoided as they may cause scratches on the bottle.
- Ensure that all parts including areas which may not be visible are thoroughly washed and rinsed to remove any milk residues.
- When not in use, keep in a dry, covered container.

Caution:

- Before using for the first time, wash and rinse the nipple thoroughly to remove the white powdered food additive that has been applied to protect the ventilation valve and Y-cut nipple opening.
- Use your fingers to gently massage around the nipple, ventilation valve and nipple opening to clean. If you scrub or pull too hard, the valve may get damaged which can cause leaks.
- The tip of the nipple is very delicate. When using a nipple brush to clean, wash very

carefully. Push the tip of the nipple with your fingers so that the nipple does not break through the tip of the nipple when washing it.



- Inspect before each use and pull the nipple in all direction. The nipples may be worn by biting. Special attention is needed for a teething child. Throw away at the first signs of damage or weakness.
- Do not leave a nipple in direct sunlight, heat, or leave in disinfectant ("sterilizing solution") for longer than recommended, as this may weaken the nipple.

Sterilization Instructions

Be sure to sterilize before every use.

Boiling Sterilization: Place all parts in boiling water for 5 minutes.

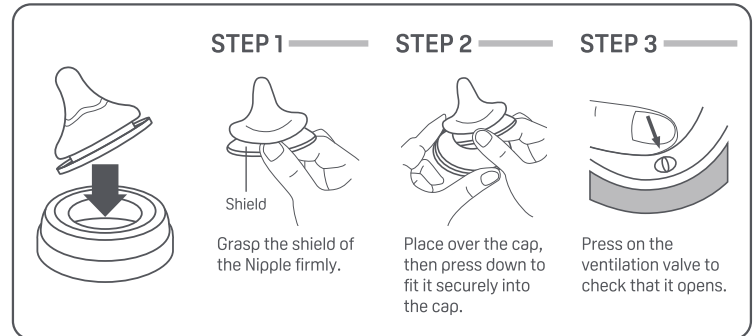
Steam Sterilization: You can use Pigeon Steam Sterilizer and follow the directions in the user manual.

Chemical and UV Sterilization are possible.

Microwave Sterilization is possible for PP/PPSU/ Glass Bottles and nipples. Do not sterilize T-Ester bottles in a microwave.

Use sterilization products made specifically for baby bottles and nipples. Follow the instructions in the user's manual for these products. With chemical sterilization, the

How to Assemble



Choosing A Nipple

Use this chart as a guide to change nipples as your baby grows. As babies of the same age may have different requirements, select according to their development.

0 ⁺ _m	1 ⁺ _m	3 ⁺ _m	6 ⁺ _m	9 ⁺ _m	15 ⁺ _m
SS	S	M	L	LL	LLL
Round hole	Round hole	Y-cut	Y-cut	Y-cut	Y-cut

Usage Tips

- For safety and hygiene reasons, it is recommended to replace the nipple at least every 2 months.
- Rotate the use of 2 or more nipples for about 2 months before replacing them. If your baby grows comfortable with one certain nipple, he or she may object if you change to a new one.

printing on the bottle may fade. It is recommended to replace the product when it starts to discolour and/ or turn cloudy.

Caution:

- All milk/ oil residue should be thoroughly removed before sterilising to avoid permanent staining of parts
- After microwave and boiling sterilization, the bottle will be hot. Be careful not to burn yourself.
- During UV sterilization, ensure that the nursing bottle and all parts have at least a

1-inch gap away from the walls of the UV sterilizer. The air ventilation outlet may generate high heat that can cause damage to the product.

Breastmilk Preparation

Pour thawed breastmilk into the bottle and warm it up. For easy and convenient warming, use Pigeon Smart Bottle Warmer set at 37°C.

For your child's safety and health WARNING!

- Continuous and prolonged sucking of fluids will cause tooth decay.
- Always check food temperature before feeding.
- Throw away at the first signs of damage or weakness.
- Keep all components not in use out of the reach of children.
- Never attach to cords, ribbons, laces or loose parts of clothing. The child can be strangled.
- Never use feeding nipples as a soother.
- Always use this product with adult supervision.
- Nursing bottles are to be used to feed your baby milk or other liquids. Do not use them for any other purpose.
- Do not use a microwave to warm contents as this may cause uneven heating. Localised high temperatures could scald your baby.

Warning: For usage of glass bottles

- Glass bottles may break when dropped or subjected to an impact. This may lead to injury or scalding.
- Inspect the bottle before and after each use. Replace it if any cracks, glass fragments or damage is found.
- Use only under adult supervision. If your child drops the bottle or falls with it, the glass may break and cause injury.
- For safety reasons, do not use bottle handles with glass bottles.
- Do not freeze. Due to thermal shock, they may break or crack when taken out of the freezer.
- Exercise caution when pouring boiling liquids into the glass bottle as it may break if the bottle is cold. Do not use ice water to cool the bottle as extreme temperature difference between the internal and external walls of the bottle can cause it to break.
- Do not use metal to stir contents or to clean within the bottle. This can damage the glass.